

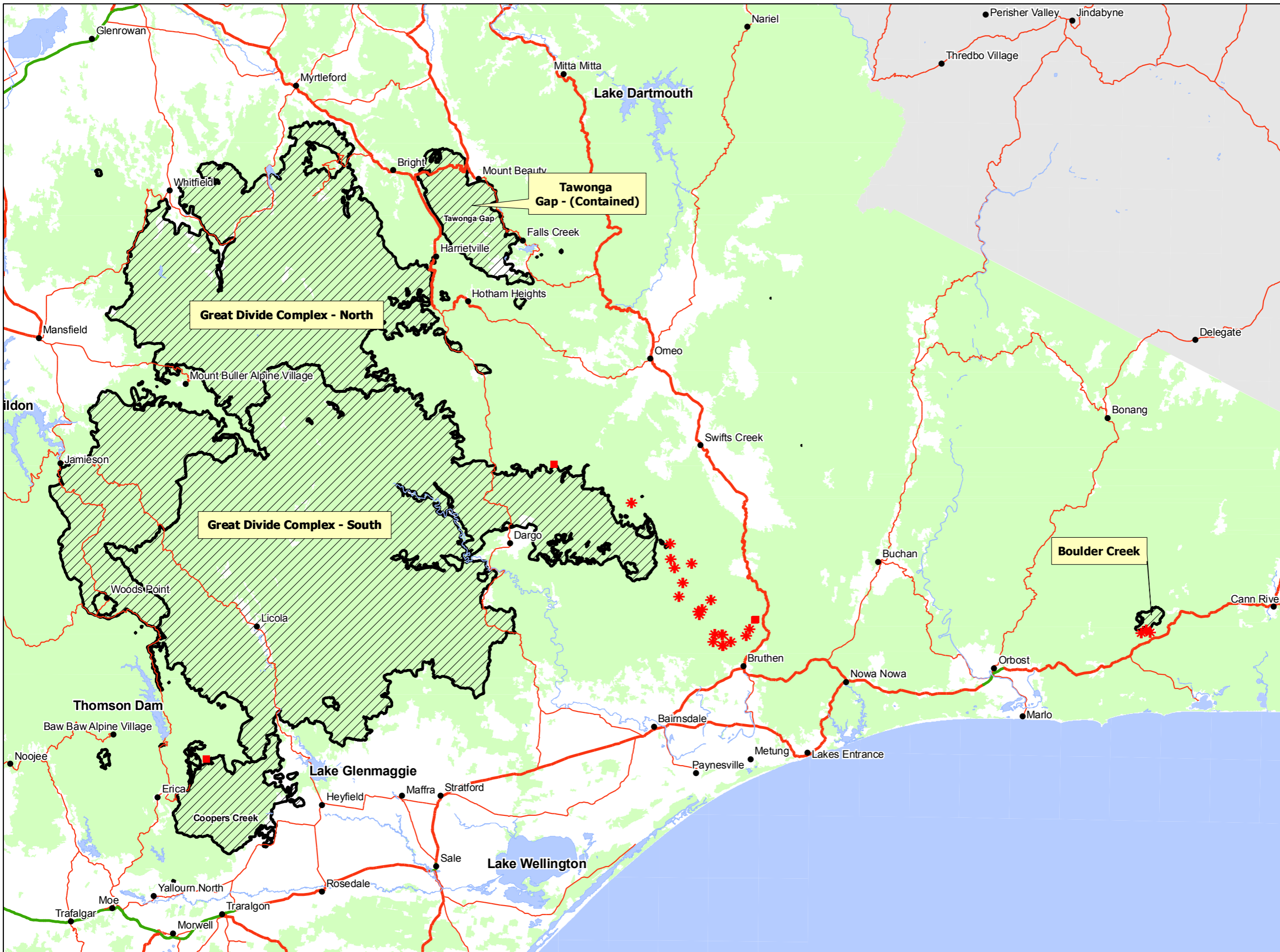
East Victoria Fires - Media Map

Map Produced: 0959hr 07 Jan 2007

Department of Sustainability and Environment



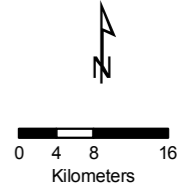
Fire Area: 06/01/07 1340hr
 Linescan: 06/01/07 1300hr
 Spot Fires: 06/01/07 2100hr



- * Spot Fire
- Hotspots last 12 hrs
- Hotspots 12 - 24 hrs
- Freeway
- Highway
- Road
- Burnt Area
- Tree cover

Hotspot data produced from Sentinal Mapping System.

Limitations of the Sentinal Hotspots:
 1/ Under ideal conditions, the hotspots shown will have been detected 1-24 hours ago.
 2/ The hotspot location on any map (no matter how detailed) is only accurate to within 1.5km.
 3/ The symbol used for the hotspot on the maps does not indicate the size of the fire.
 4/ Not all hotspots are detected by the satellites. Some heat sources may be too small, not hot enough, or obscured by thick smoke or cloud.
 5/ The satellite detects any heat source that is hotter than normal. As well as fires these may include industrial operations such as furnaces.



Disclaimer: This map is a snapshot generated from Victorian Government data. This Material may be of assistance to you but the State of Victoria does not guarantee that the publication is without flaw of any kind or is wholly appropriate for your particular purposes and therefore disclaims all liability for error, loss, damage which may arise from reliance upon it.

(c) The State of Victoria Department of Sustainability and Environment 2006

File: MediaMap_A3_20070107_0500

